



## Edge<sup>®</sup> 2 with Vantage Vector<sup>®</sup>

The power of video and radar sensor fusion

### Benefits of the Vantage Vector



Dilemma zone detection



Enhanced data information includes vehicle volume, speed and distance



Single-sensor for advanced detection



### The proven power of video...and more

Vantage Vector<sup>®</sup> is an all-in-one vehicle detection sensor with a wide range of capabilities: stop bar detection, advanced-zone detection and sensing that enables advanced safety and adaptive control applications.

Vector includes all of the proven benefits of Iteris video detection:

- High Accuracy
- High-resolution video image for remote viewing
- No trenching or pavement cutting for installation
- SmartCycle<sup>®</sup> technology for bicycle differentiation
- PedTrax<sup>™</sup> technology for pedestrian tracking
- VantageLive!<sup>™</sup> compatibility

### Enhanced dilemma-zone precision

Vantage Vector offers high precision for dilemma zone detection by integrating the video field-of-view with radar sensing. Enhanced information includes the number of vehicles, speed, and distance in user configurable zones, that can be used for special applications.

### Extended range for higher speed approaches

The extended range of the advanced zone includes enhanced count, speed, and occupancy (CSO) measurements, where data from advanced detection zones is desired.

# Vantage Vector®

The power of video and radar sensor fusion

## More Benefits

- Performs in the most challenging lighting conditions
- Advanced self-cleaning camera lens ensures lower maintenance
- Provides for advanced intersection safety features such as Dilemma Zone and all Red Protect with compatible signal controllers
- Advanced radar detection to over 500 feet from sensor head

## SPECIFICATIONS

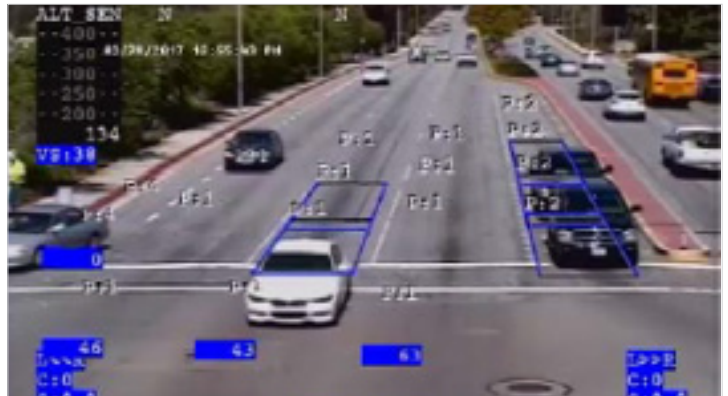
### Vector Sensor

<b>Image Sensor</b>	1/4" CCD
	380,000 effective pixels
	550 Horizontal TV lines
	> 50 dB S/N ratio
	1.0 lux minimum illumination
	2D/3D Noise Reduction
	Automatic white balance
	1 Vpp (sync negative)
	12x optical zoom lens
	f=3.7 mm (wide) to 44.4 mm (tele)
<b>Lens Heater</b>	Indium Tin Oxide, proportional power
<b>Radar</b>	Frequency - 24GHz (K-band)
	Accuracy - Speed 0 to 150 mph ± 1 mph (240 kph ± 1.5 kph)
	Tracked objects - Up to 20
<b>Physical</b>	Detection - Across 4 lanes of traffic
	Weight - 10lbs (4.55 kg)
	Size - 14"H x 15"W x 17"D (35.6cm x 38.1cm x 43.2 cm)
	EPA - Less than 1.5 sq. IP67 rated enclosure

<b>Operating Temp.</b>	-35°F to +165°F (-37°C to +74°C)
<b>Humidity</b>	0 - 100% RH
<b>Vibration</b>	0.5G, 3 axes, 5-30Hz
<b>Shock</b>	10G in all 3 axes
<b>Regulatory</b>	FCC part 15, Class A
	NEMA TS-2 compliant
<b>Communications</b>	Via data embedded on video signal
<b>Warranty</b>	3 years limited warranty

### Vector on Edge 2 Platform

<b>Electrical</b>	110/220 VAC, 10W (typical), 20W (peak)
<b>Radar</b>	Tracked Objects - up to 20
<b>Comms</b>	Via data embedded on video signal
<b>Connections</b>	Terminal Block
<b>Setup/Config</b>	Mouse & Monitor or VRAS
<b>Processor</b>	Edge2



Vector on Edge2 Platform



Copyright © 2019 Iteris, Inc. All rights reserved.

NOTICE: Iteris, Inc. reserves the right to change product specifications without notice. Information furnished is for informational purposes only. This information may not be complete or the latest revision. For the most up-to-date information, please contact Iteris, Inc.

iteris®