



Vantage Next[®] with Vantage Vector[®]

An all-in-one hybrid detection system with powerful performance beyond any other detection solution

Benefits of Vantage Next with Vantage Vector



Lane by lane functionality for intelligent intersection data



The ideal solution for adaptive traffic control systems



A cost-effective and easy-to-install sensor – no more cutting loops or pulling extra cables



Advanced performance in a single sensor

Vantage Next paired with Vantage Vector is a one-of-a-kind solution that provides both state-of-the-art video and advanced radar detection for maximum intersection performance and safety. Combined with Iteris' leading all-weather stop bar detection, the Next platform with Vector sensor offers multiple applications including use with adaptive systems, advanced dilemma zone and collision avoidance functionality. The system's improved zone logic, phase input control and greater data set is a game changer – it's essentially the only sensor you will ever need!

Together with the Vantage Next platform, Vector provides advanced individual lane detection, delivering even more precise traffic data. The 16 radar zones are easily configurable and can be programmed to any of the seven zone types including: presence, delay, extension, count, pulse, CSO and none. In addition, they can be combined with 32 video zones to provide a powerful data set for advanced ITS applications. These include long-left-turn pockets and queue detection making it the ideal solution for all traffic management needs.

Traffic adaptive and responsive

When used with adaptive traffic control systems, the Next with Vector solution improves efficiency and responsiveness by providing accurate and robust detection data to feed into virtually any platform. The Iteris system is fully compatible with Iteris' VantageLive! and SPM platforms as well as other third party web and mobile-based traffic measurement applications.

Vantage Next[®] with Vantage Vector[®]

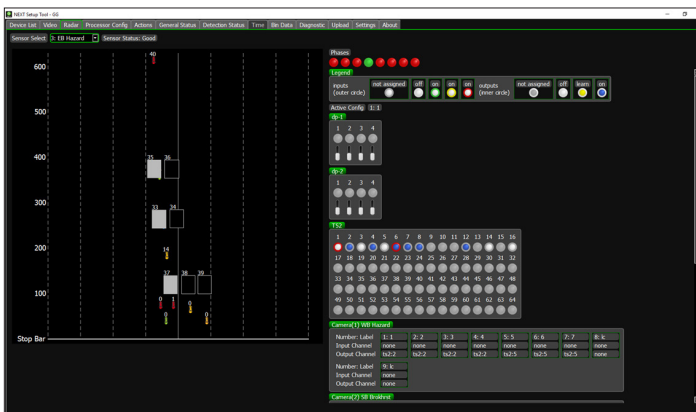
An all-in-one hybrid detection system with powerful performance beyond any other detection solution

More Benefits

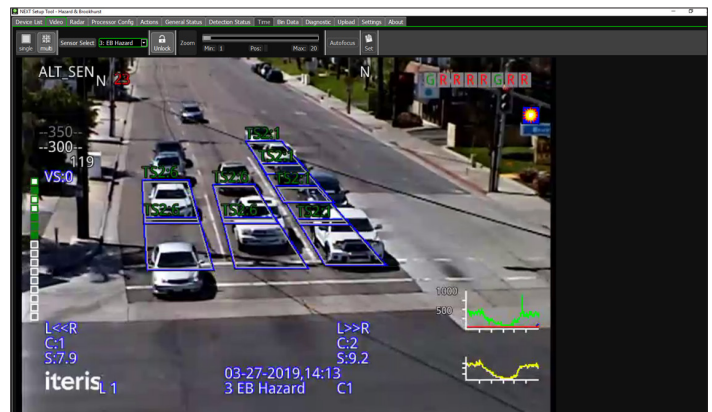
- Fully compatible with Iteris' SPM and VantageLive! software for more detailed and accurate traffic data
- Includes SmartCycle[®] and PedTrax[®] for bicycle and pedestrian detection and counting
- Vehicle detection up to 600 feet
- Color-coded zones for effortless viewing of phase activity
- Choose from a rack-mount or shelf-mount cabinet control units

SPECIFICATIONS

Imager	Focal Length 5.4° tele to 50.7° wide Dynamic Range > 100dB I.O Lux Minimum Illumination 3D-DNR Noise Reduction	Electrical	48VDC 10W(Typical) 20W(Max)
Lens	12x Optical Zoom	Physical	17" (432mm) D x 15" (381mm) W x 14" (356mm) H Excluding Mounting Bracket
Heater	Indium Tin Oxide	Weight	10 Pounds (4.55kg)
Connections	Terminal Block RJ-45	Environment	Temperature -35°F to +165°F (-34°C to +74°C) Humidity 0% to 95% non-condensing Vibration 0.5G, 3 axes, 5-30Hz Shock 10G in all 3 axes
Radar	Frequency 24GHz (K-band) Accuracy Speed 0 to 150mph ±1mph (0 to 240kph ±1.5kph) Detection Minimum 4 lanes Tracked Objects Up to 60	Ingress Protection	IP 67
		Regulatory	NEMA TS-2 FCC part 15, Class A
		Warranty	3 years limited warranty



Vector on Next - Radar Zone Operation



Next Video Stream Displaying Video and Radar Operation



Copyright © 2019 Iteris, Inc. All rights reserved.

NOTICE: Iteris, Inc. reserves the right to change product specifications without notice. Information furnished is for informational purposes only. This information may not be complete or the latest revision. For the most up-to-date information, please contact Iteris, Inc.

