

Vantage Next® Platform

The next generation of an integrated detection system

Features of the Vantage Next platform



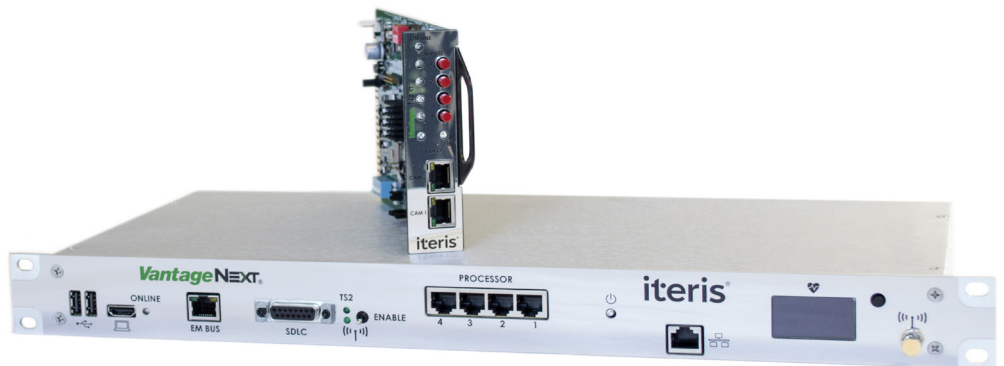
Integrated multi-feature control cabinet system for simple installation



Sending high-resolution streaming video to a traffic management center



Form factor options for different cabinet configurations



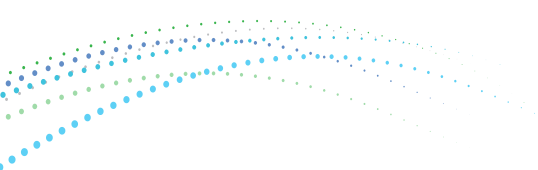
State-of-the-art platform

Vantage Next® is Iteris' next generation video detection platform that capitalizes on the latest technology. Vantage Next uses a powerful processor that enables future functional growth while maintaining proven Iteris video detection performance and reliability. The architecture supports expanding ITS applications and easily integrates with existing and future technologies.

Easy setup and Configuration

With a user-friendly configuration software and fewer components, the Vantage Next platform sets the bar for simple installation and ease of use.

Surge Panels and Extenders



Vantage Next® Platform

The next generation of an integrated detection system

Benefits

- Easy to install, configure and maintain
- CAT5 cable connections
- Simple and convenient access
- Flexible and scalable
- Multiple CCU configurations available

SPECIFICATIONS

Video Processor

Power	12 or 24 VDC, 5W typical
Video Output	Compressed Digital Stream
Detector I/O	4 open-collector outputs and 4 inputs per processor card
	128 total outputs /64 total inputs using extension modules
Status Indicators	Primary power Video input status Detection outputs
Communications	Ethernet, DCAM I/F

CCU

Communications	Ethernet USB Type A (x2) Wi-Fi SDLC communications
Video Output	MPEG-4 and H.264 Resolution DI (720x480 pixels) Fixed frame rate of 15fps

19" Rack Mount

Power	110/220 60/50 Hz 20 W Max
Dimensions	19" L x 8.75" D x 1.75" H (483mm L x 222mm D x 45mm H)
Weight	3.9 lb (1.77kg)
Configurations	Up to 4 cameras, video processors required

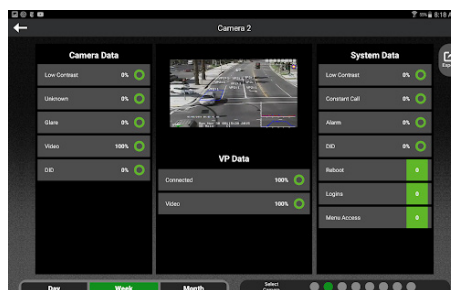
NEMA Shelf Mount

Power	48VDC @ 120W
External Power Supply	DIN Rail 110-240VAC
Dimensions	4" L x 10.5" D x 10.5" H (102mm L x 267mm D x 267mm H)
Weight	6lbs (2.72kgs)
Configurations	Up to 4 cameras, video processors required TS2; 2 cam or 4 cam, no video processors required

General

Op. Temperature	-35°F to +165°F (-34°C to +74°C)
Humidity	0% to 95% non-condensing
Vibration	0.5G, 3 axes, 5-30Hz
Shock	10G in all 3 axes
Regulatory	NEMA TS-2 compliant FCC part 15, Class A
Warranty	3 years limited warranty

Vantage Next Viewer and Next Setup Tool



Windows is a registered trademark of Microsoft.
iOS is a registered trademark of Apple.



NEMA Shelf-Mount CCU



Copyright © 2018 Iteris, Inc. All rights reserved.

NOTICE: Iteris, Inc. reserves the right to change product specifications without notice. Information furnished is for informational purposes only. This information may not be complete or the latest revision. For the most up-to-date information, please contact Iteris, Inc.



iteris®